

EC3000 UPS ONLINE

10/20/30 kVA 3P/3P



Smart Charger and Intelligent Battery Care

EC3000 Series is equipped with **3-stage extendable charger**. The extendable charger design can be stacked in numbers for large-capacity battery charging. A deep battery discharge feature prevents the batteries damage. EC3000 has adjustable battery number to work in normal operation even with 18 batteries.

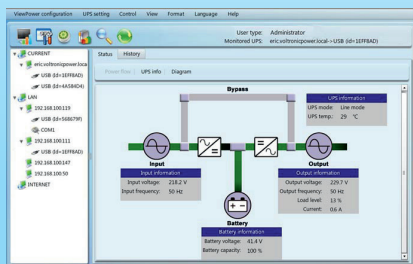
Flexible and Reliable Configurations for all needs

EC3000 Series has selectable operation modes: **Single, N+X Parallel Redundant, Hot Standby, Ecomode, 50/60 Hz Frequency Converter**.

ECO mode operation offers efficiency as high as 98% to cut energy usage & cost. UPS power application via static bypass, timely returning to online double conversion when the need arises.

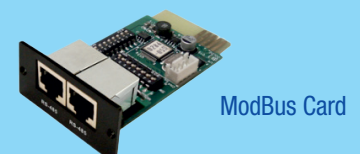
Monitoring Software ViewPower - UPS Management

All EC3000 units are endowed with CD ViewPower Software and communication cable.



- Allows control and monitoring of multiple UPSs via local PC, LAN or Internet
- User-friendly power analysis graphs
- Real-time dynamic graphs of UPS data
- Safely OS shutdown and protection from data loss during power failure
- Warning notifications via audible alarm, broadcast, mobile messenger and email
- Scheduled UPS on/off, battery test, programmable outlet control and audible alarm
- Password security
- Supports multiple OS and local languages

Accessories for Remote Control



Compact and Reliable Power Protection for:

- Servers, IT and network equipment
- Office telecommunication and security systems
- Medical, diagnostic and test devices
- Bank and Finance applications
- Chemical and Manufacturing process
- Auxiliary and Emergency care systems

Advanced Technology and Optimal Power Performances

A true double conversion UPS will provide clean, high level quality power to fully protect mission-critical devices. The DSP controller provides an improved and cost-effective solution with highest performance.

Output power factor up to 0,9 offers more active power to modern IT equipment.

The **wide input voltage range (190V-520V)** assures power supply to connected devices under extremely unstable network, protecting the batteries life. EC3000 is input low impact with almost unitary power factor and negligible harmonic distortion, fully generator compatible without power oversizing.

All models have the back-feed protection and **Emergency Power Off (EPO)** input to secure the personnel and equipment in case of emergency cases.

All EC3000 units are equipped with **maintenance rotary switch** to assure continuous power to critical devices during UPS maintenance. Dual inputs version with separated bypass is available for 10-20kVA.

EC3000 is as standard **with internal battery and DC terminals for additional battery cabinet** for scalable runtime; the version EC3000SC without battery and integrated super charger for long back time.

EC3000/10000/20000/30000VA Technical Guide

| MODEL | EC3310 | EC3310SC | EC3320 | EC3320SC | EC3330 | EC3330SC |
|--------------------------------|---|----------|-------------|----------|-------------|----------|
| CAPACITY [VA/W] | 10000/9000 | | 20000/18000 | | 30000/27000 | |
| INPUT | | | | | | |
| Nominal Voltage | 3 x 400 Vac (3Ph+N) | | | | | |
| Voltage Range | 190–520 Vac @ 50% load or 305–478 Vac @ 100% load | | | | | |
| Frequency Range | 46 ÷ 64 Hz | | | | | |
| Current THD% | < 3% | | | | | |
| Power Factor | ≥ 0,99 @ Nominal Voltage (100% load) | | | | | |
| OUTPUT | | | | | | |
| Selectable Voltage | 3 x400 Vac (3Ph+N) | | | | | |
| AC Voltage Reg. (Batt. Mode) | ± 1% | | | | | |
| Freq. Range (Synch. Mode) | 46÷54 Hz or 56÷64 Hz | | | | | |
| Freq. Range (Batt. Mode) | 50/60 ± 0.1 Hz | | | | | |
| Current Crest Ratio | 3:1 (max.) | | | | | |
| Harmonic Distortion | ≤ 2% THD (linear load); ≤ 4% (non-linear load) | | | | | |
| Transfer Time AC to Batt. Mode | 0 ms | | | | | |
| Inverter to Bypass | 0 ms | | | | | |
| EFFICIENCY | | | | | | |
| AC Mode | 92% | | | | | |
| Battery Mode | 90% | | | | | |
| BATTERY | | | | | | |
| VRLA Type | 12V / 9Ah | External | 12V / 9Ah | External | 12V/9Ah | External |
| Numbers per string | 20 (selectable 18-20) | | | | | |
| Max Num. of internal batteries | 40 | - | 40 | - | 60 | - |
| Internal batteries as standard | 20 | - | 40 | - | 60 | - |
| Standard backup time | 10min | - | 10min | - | 10min | - |
| Charging Current (max.) | 1 A | 4 A | 2 A | 4 A | 4 A | 12 A |
| Charging Voltage | 273 Vdc ± 1% | | | | | |
| PHYSICAL AND GENERAL | | | | | | |
| Wide (mm) | 250 | | | | 300 | 250 |
| Deep (mm) | 815 | 592 | 815 | 592 | 815 | |
| Height (mm) | 826 | | | | 1000 | 826 |
| Weight (kgs) | 109 | 38 | 164 | 40 | 234 | 64 |
| Noise level at 1m | < 60 dBA | | < 65 dBA | | | |
| Operating temperature | 0 ÷ +40°C | | | | | |
| Relative humidity | < 95% non-condensing | | | | | |
| Altitude site | < 1000m without derating | | | | | |
| Colour | Black Gray 7021 | | | | | |
| IP Rating | IP20 | | | | | |
| Remote signals | Dry contact (as option) | | | | | |
| Remote Controls | EPO and Bypass (as standard) | | | | | |
| Communications | USB and RS232 ports + slot for communications interface | | | | | |
| Options for communication | SNMP Adapter, Centralized Monitoring Software, Thermal and Humidity sensors, J-Bus/ModBus, ProfiBus, Additional programmable contacts | | | | | |
| Standards | IEC 62040-3, IEC 62040-2, IEC 62040-1-1, CE Mark; IEC 62040-1-1, EN 50091-2, EN 60950, EN 60529 and VFI 111 | | | | | |
| Classification as IEC 62040-3 | (Voltage Frequency Independent) VFI-SS-111 | | | | | |
| Cable entrance | Bottom | | | | | |
| Moving the UPS | Transpallet | | | | | |
| Storage temperature | -25 ÷ +70°C | | | | | |

* Autonomy is calculated at the typical load.

** Product specifications are subject to change without further notice.

EC3000 Battery Cabinet

| UPS Power [kVA] | Part Number | N. Batt. | Type | Dimensions WxDxH [mm] | Weight [kgs] |
|-----------------|-------------|----------|-----------|-----------------------|--------------|
| 10/20/30 | BEC4200000 | 0 | - | 250 x 815 x 826 | 11 |
| | BEC4200777 | 60 | 12V / 7Ah | | 150 |
| | BEC4209999 | 80 | 12V / 9Ah | | 242 |

Note: Further battery pack configuration are available. Contact: info@lever.it